

# Fire Escape Plans

Protecting your means of escape



## What are Fire Escape Plans?

### Protecting your means of escape

Fire Escape Plans are life saving preparedness tools and provide a critical role in the safe evacuation of a building in the event of an emergency.

One of the most important functions that needs to occur as soon as a fire is realised is getting people to safety as quickly and effectively as possible. Knowing where to go and how to get there is the key to a successful evacuation.

Fire Escape Plans provide the essential guidance required to get out of a dangerous area quickly and safely.



The recent release of BS (ISO) 23601 defines an internationally accepted set of guidelines which should be followed in the design of all Fire Escape Plans. The standard promotes the use of large, clear and easy to interpret pictorial floor plans, and the reduction in use of single or multi lingual text. Using a common approach to the design, layout, use of colour and symbols ensures that plans are recognisable and understandable by all readers, regardless of their language.

## Key Elements

### Protecting your means of escape

Each of our Fire Escape Plans provides you with the key information that is required to quickly and safely evacuate the building in a format that is readily understood. By implementing professionally designed fire escape plans you can rest assured that the details are clear, concise, accurate and meet Bs and International standards.

### Fire Equipment Locations

The locations of fire extinguishers, call points, fire exits and escape routes are accurately detailed on the plan. By using British Standard symbols, the equipment icons will match the fire signage already in use in your building.

### Safe Refuge

For those buildings that have safe refuge areas, the plans can be designed to show their location and also information on what actions need to be taken if the safe refuge areas are occupied.

### Assembly Point

A simplified building layout can be included on the plan showing the building outline, surrounding streets and the location of the assembly point.

### Fire Exits

Staircases that can be used during an evacuation are shown and the escape routes for all floors will lead to these. Staircases which are not to be used will also be easily identifiable.

### Correct Orientation

Each Fire Escape Plan is correctly oriented to ensure that directions to the closest means of escape from the readers location remain correct.

### You Are Here

Each plan is also accurately marked to show the exact location of the reader. By using this in conjunction with the correct orientation, you can be sure that the escape directions will provide the quickest safest route to safety.

## Fire Escape Plans

### Protecting your means of escape

#### Fastest Routes

The primary goal of any evacuation is to make sure that everyone gets out of the area of danger as quickly and effectively as possible. For this to happen there needs to be maps, drawings and written instructions that advise the buildings occupants how to leave the immediate area and which routes are the fastest ways to safety.

The Escape Plan should illustrate the fastest ways out of the building from every area and accurately identify the locations of fire equipment, fire exits and means of raising the alarm.

#### Alternate Routes

Alternate routes out of an area should also be readily identifiable as a backup to the fastest routes in the event they are inaccessible as a result of the emergency. For that an alternate way out would need to be used.

Alternate routes are essential in planning evacuations in buildings of all sizes. An alternate exit route can be an important life-saver when people are trying to get to safety.

#### Designated Safe Areas

An evacuation is intended to get people out of the building in question, but telling them where to go once they get out is also important. For a building or facility the designated safe area could be a car park across the street or perhaps at an open area near to the building.

#### Staff Accountability

Once the building has been evacuated, it is important to understand whether the building has been successfully evacuated. Implementing a simple floor sweep process, undertaken by the buildings fire marshals will help. Details of cleared floors or those that may still be occupied should be reported to the person responsible for ensuring the evacuation success and responding Fire and Rescue Service.

## How are the plans created?

### Protecting your means of escape

We aim to make the design of your fire escape plans as simple as possible, All we need is a copy of your floor plans which have been marked up to show the following:

- Fire extinguisher locations
- Call point locations
- Fire exits
- Safe refuge areas and
- Assembly point.

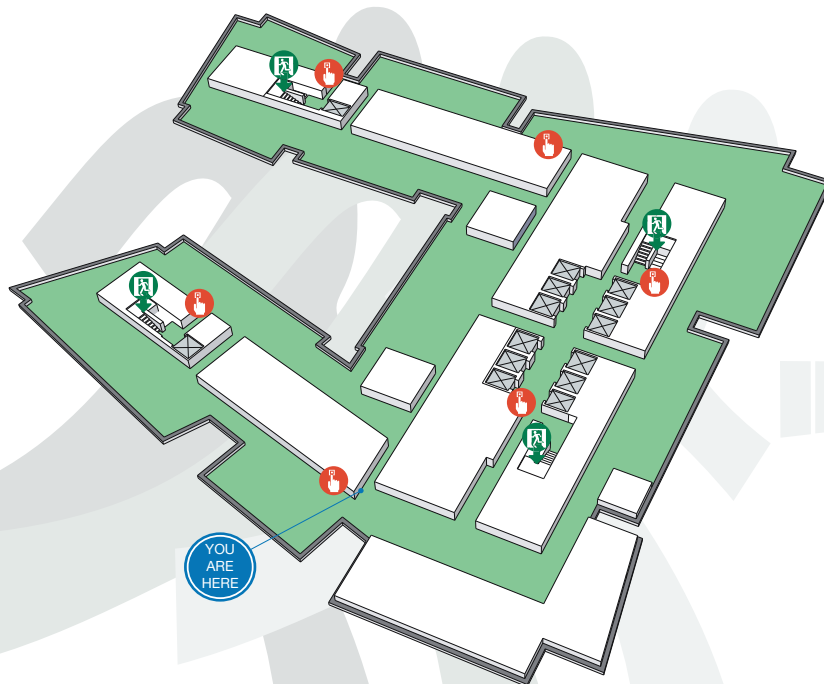
We can accept floor plans in almost every format including .dwg, .pdf, .bmp, .tiff .jpg and also hard copy.

We utilise a full proofing process. We create a set of proof plans for you to check and will only proceed to creating the final artwork once these have been approved.

All completed artwork is sent to you by default as .pdf. We do however have a range of frames and holders that we can provide. We are also able to print on all sizes up to and including A1 in-house. If you would like further information on any of these options, please let us know.

## FIRE ESCAPE PLAN

LEVEL 2



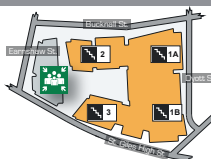
### ON DISCOVERING A FIRE

Raise the alarm by using the nearest fire alarm call point.  
Leave by the nearest fire exit.  
Proceed directly to your fire assembly point.


### ON HEARING THE ALARM

Leave by the nearest fire exit.  
Proceed directly to your assembly point.  
**DO NOT** stop to collect personal belongings.  
**DO NOT** use the lift.

### SITE OVERVIEW PLAN



### LEGEND

FIRE EXIT  ESCAPE ROUTE   
CALL POINT  ASSEMBLY POINT 

Just give us a call and we can discuss your requirements and pricing.

### Contact Information

Vulcan Fire  
Grove House  
Booth Street  
Haslingden  
Rossendale  
BB4 5JA

**Tel:** 0845 017 9783

**email:** [info@vulcan-fire.co.uk](mailto:info@vulcan-fire.co.uk)

**web:** [www.vulcan-fire.co.uk](http://www.vulcan-fire.co.uk)